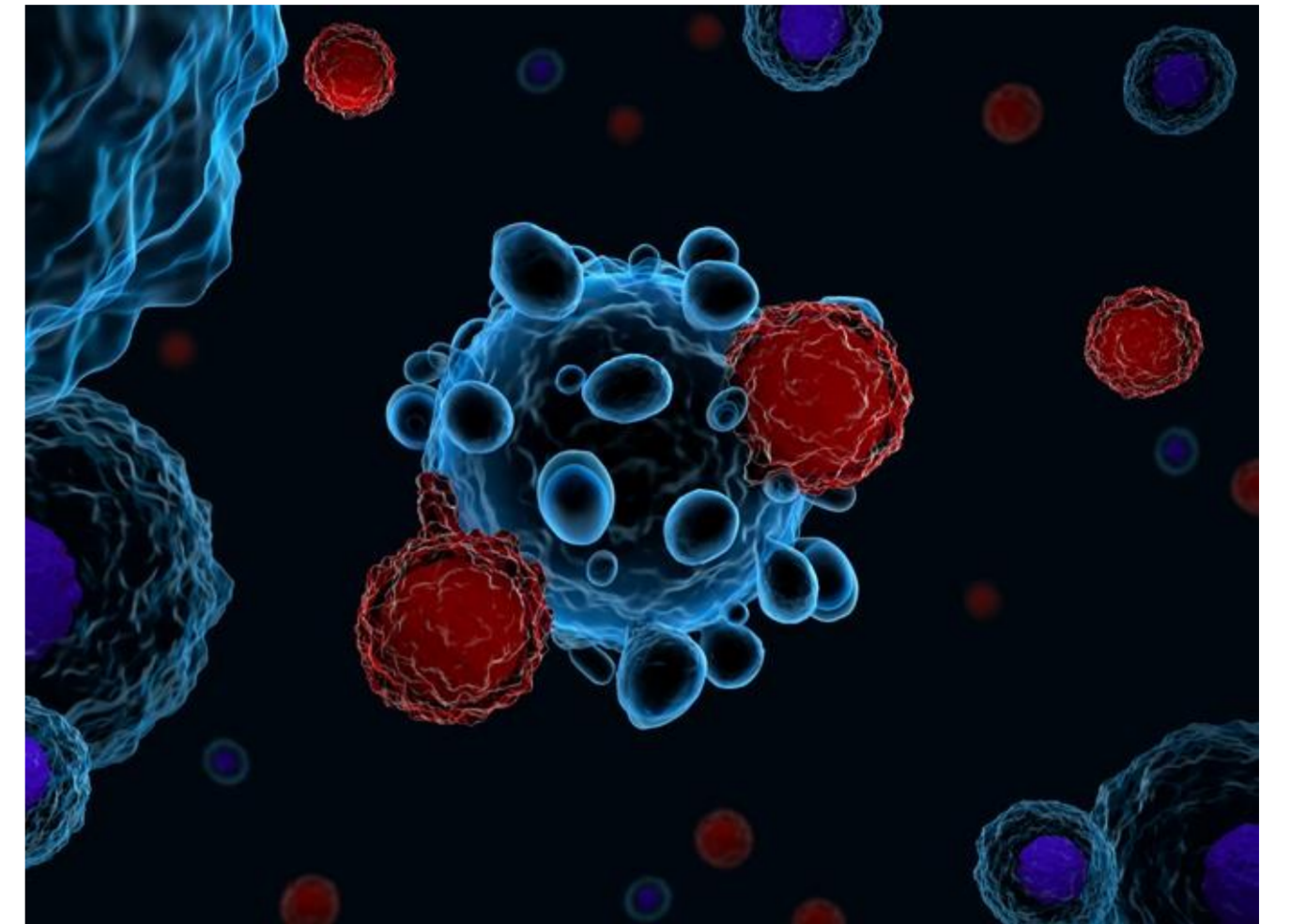


BioMab, Inc. discovers and develops cutting edge immune-based diagnostics and therapeutics to enable healthcare professionals to provide patients with personalized care.

The company was founded through close collaboration with a leading research group specializing in the field of antibody technologies and targeted therapy at Academia Sinica, Taiwan.

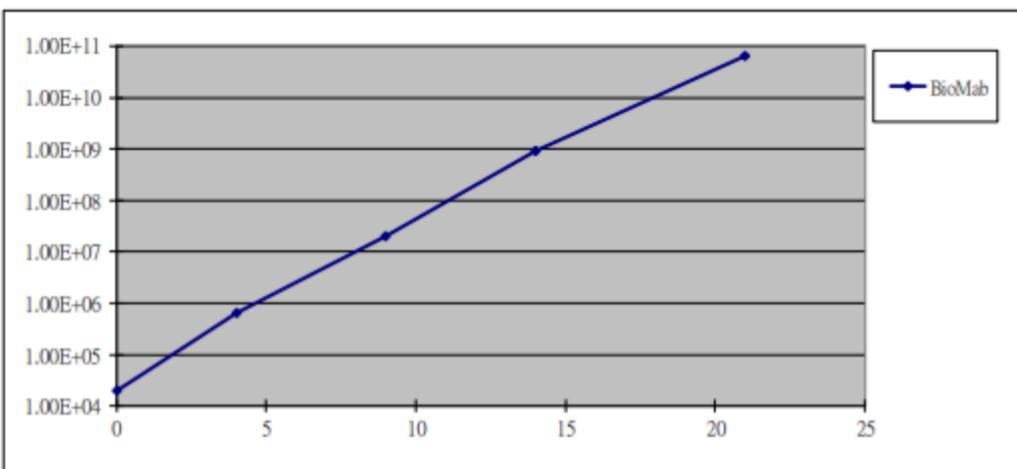


The advantages of BioMab MSC expansion kit

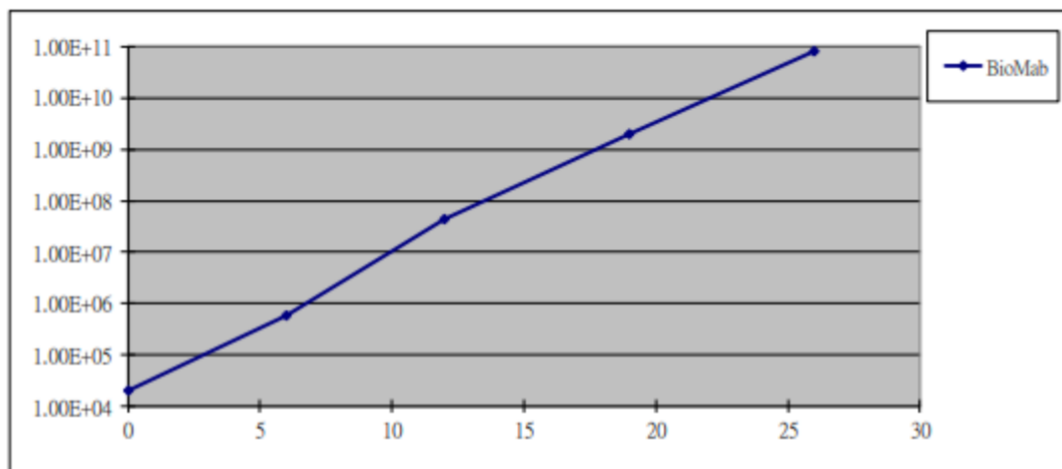
- No need for addition of heparin, xeno-free, lot to lot consistency
- Suitable for MSC derived from adipose tissue and bone marrow
- Purity of NK > 90 %

Doubling Time for AD-MSC & BM-MSC

Adipose tissue MSC(AD-MSC)



Bone Marrow MSC(BM-MSC)

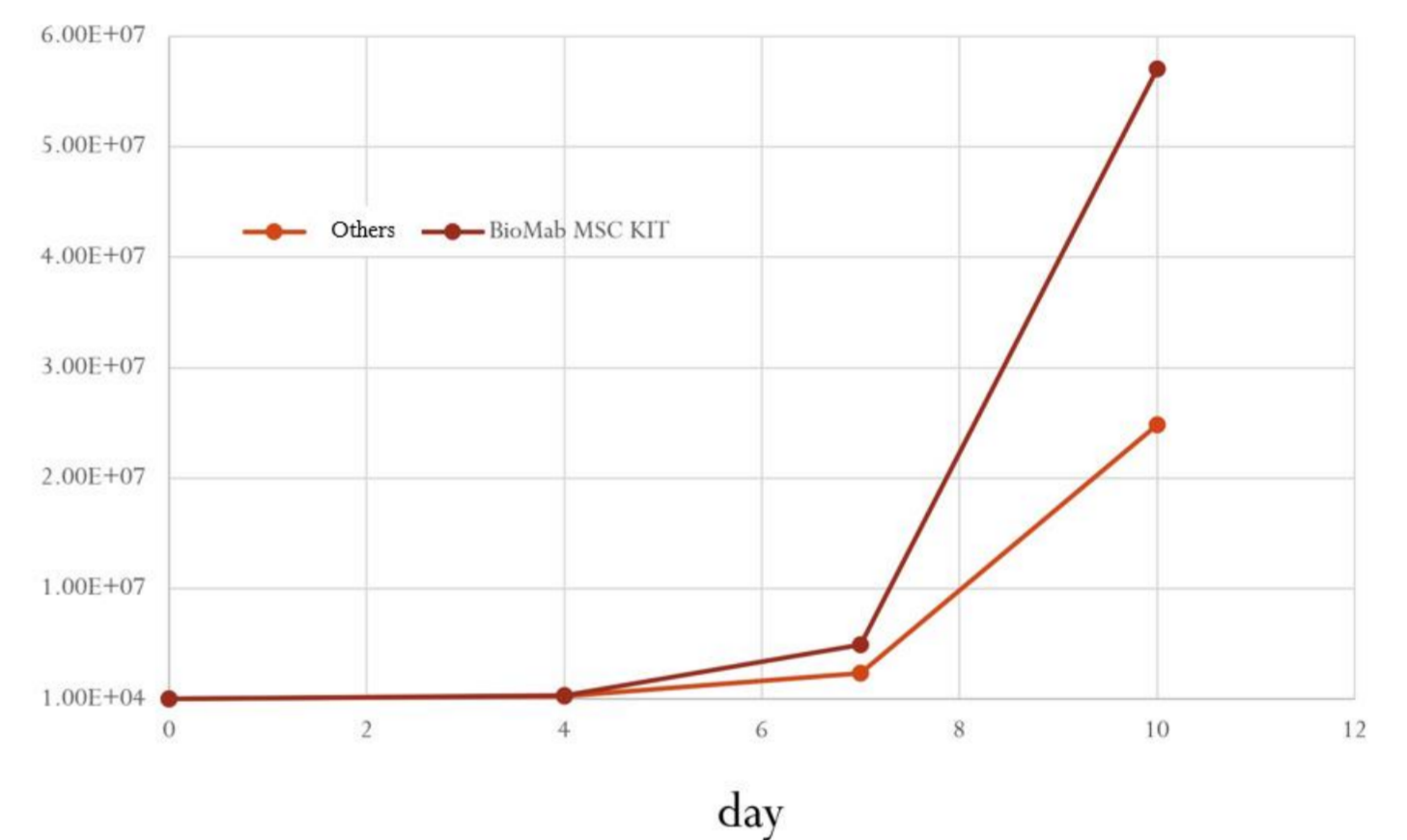


Culture medium: BMI-MSC medium + 5% BMI-hPL

AD-MSC Doubling Time \approx 23.29 Hr

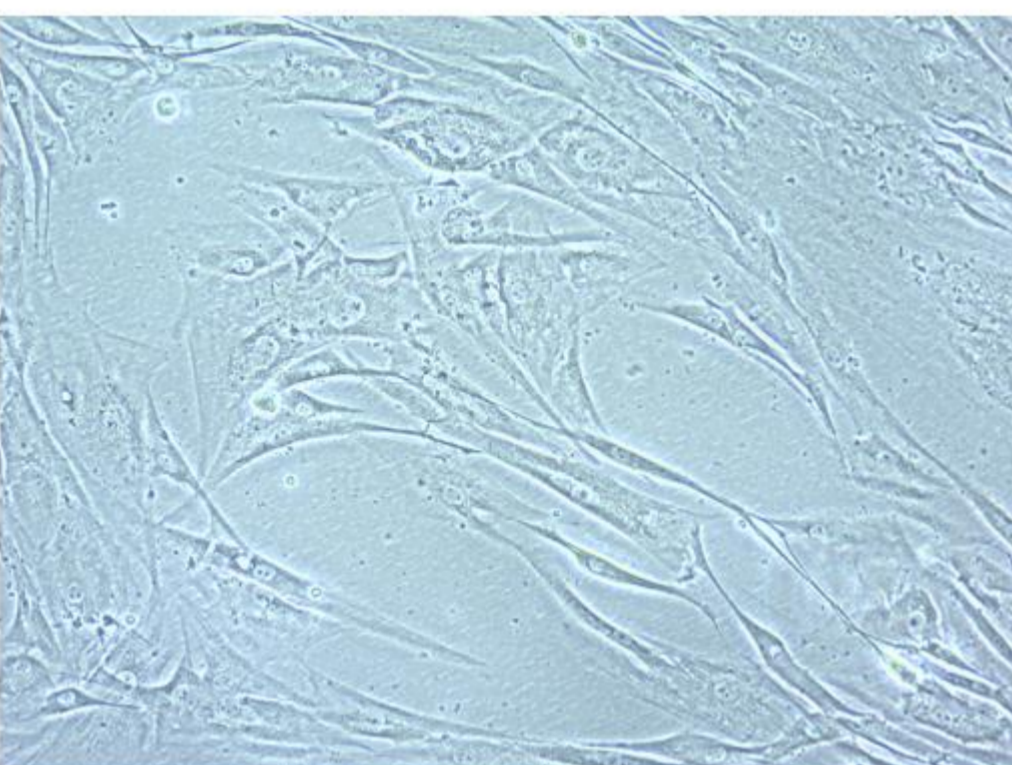
BM-MSC Doubling Time \approx 28.39 Hr

Cell Growth Curve

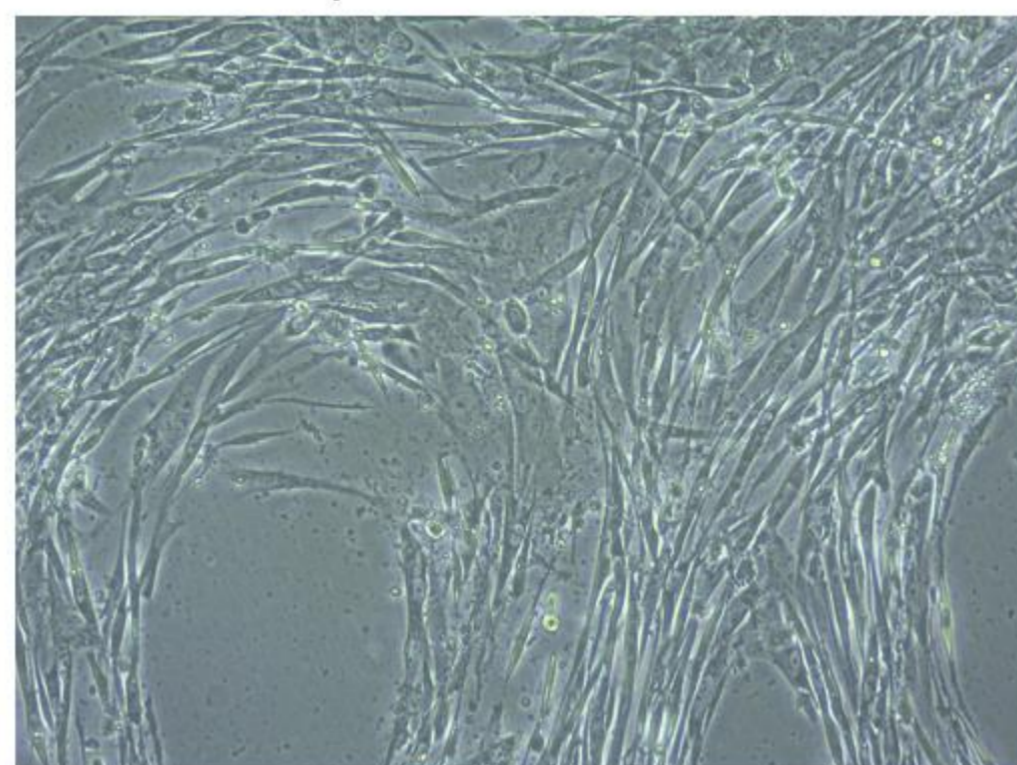


Cell Morphology for AD-MSC & BM-MSC

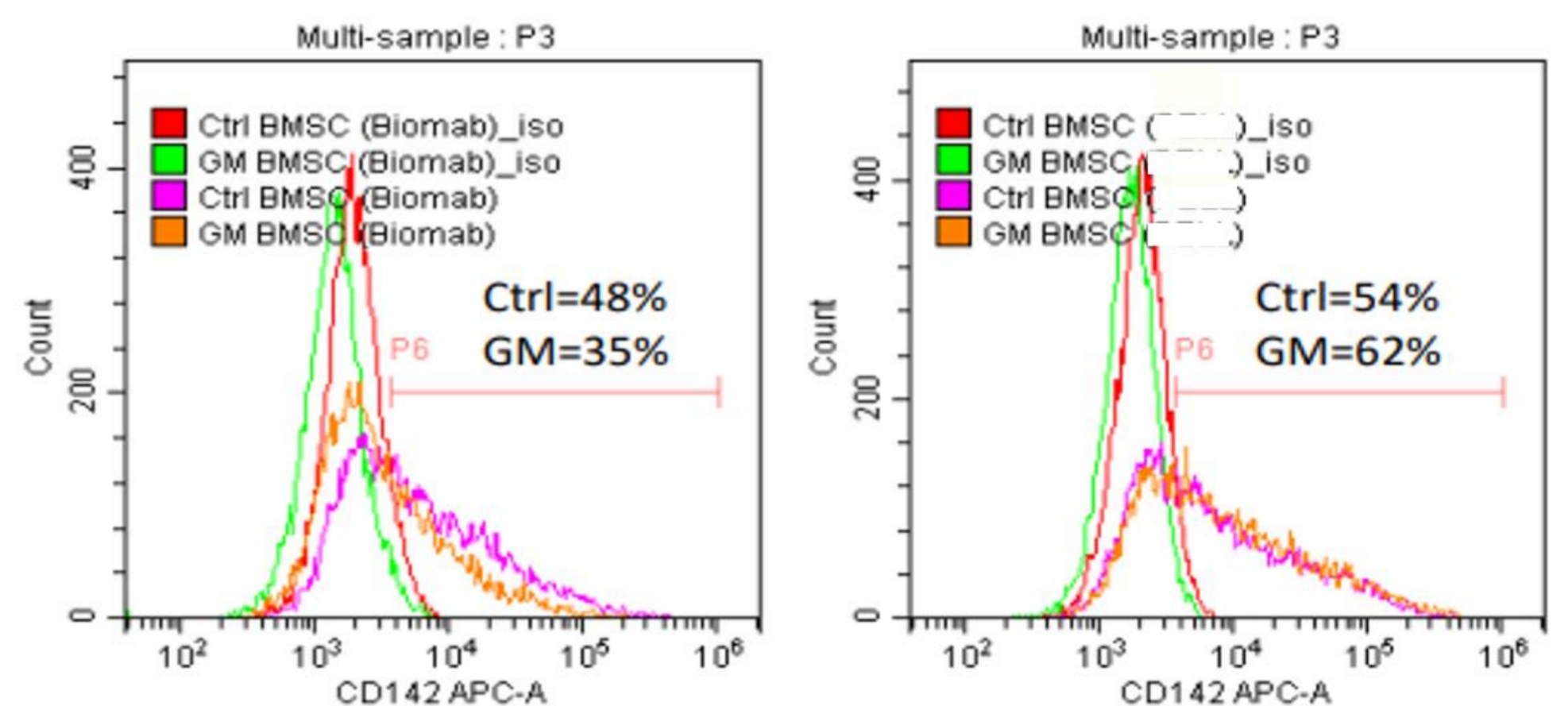
AD-MSC ,100X



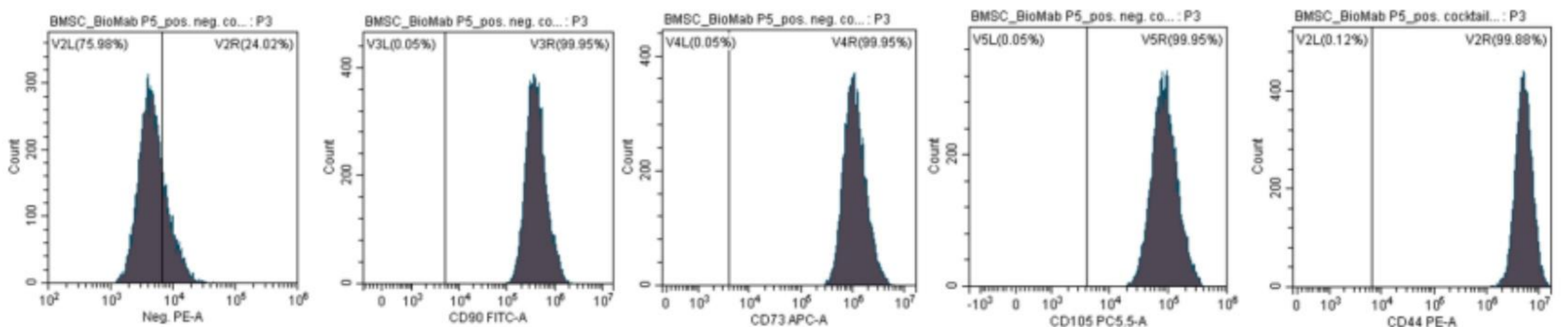
BM-MSC,100X



BM-MSC P7 CD142 (tissue factor) Expressions



MSC CD Markers Expressions using BioMab MSC Kit



For more information, please contact us at

joshua.ho@biomabinc.com

<http://www.biomabinc.com>

