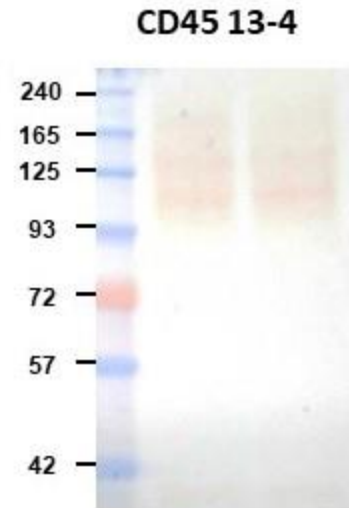


CD45 antibodies Western blotting assay

Non-reducing SDS-PAGE



- **Cell lysate:** PBMC 45 μ g/ lane
- 8% SDS-PAGE gel
- **Blocking buffer:**
5% skim milk, 1hr, RT
- **Antibody for immunoblot:**
1 μ g/ml, O/N, 4°C
- **Secondary Ab:**
1:5000 in 1%BSA, 1hr, RT