

**EpCAM Antibody Summary:**

Species: Hu

Gene: EpCAM

Applications: WB, ELISA, FACS, IFA, IHC

Purity: IgG was purified by affinity chromatography resin

Clonality: Monoclonal

Host: Mouse

**EpCAM Antibody Details:**

Clone: 3-5

Isotype: IgG<sub>2</sub>b

Immunogen: Purified EpCAM

Localization: Cell membrane

Species reactivity: Reacts with Human only. Cross reactivity with mouse is not observed.

**Applications:**

This product can be used in flow cytometry, ELISA, Western blot, immunocytochemistry and immunofluorescence staining.

Dilutions:

Flow Cytometry and ELISA: 0.01 to 1 µg/ml;

WB, IHC and IF: 0.1 to 1 µg/ml

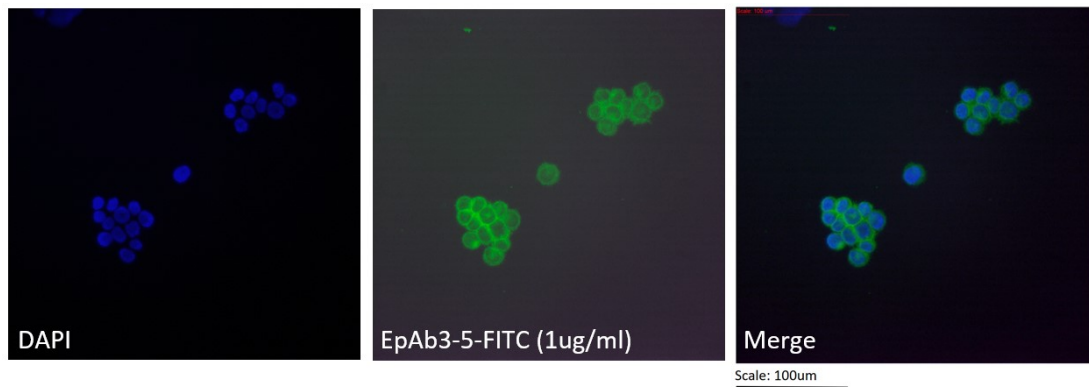
**Packaging:**

Storage condition: store at 4 °C . DO NOT FREEZE and keep away from light.

Storage buffer: PBS (pH 7.4) with 0.09% NaN<sub>3</sub>

**Example:**

(A) Immunofluorescence staining of human colorectal carcinoma cell line HCT116 (40X).



(B) Determination of EpAb3-5-FITC binding affinity in HCT116 cell line by flow cytometry.

