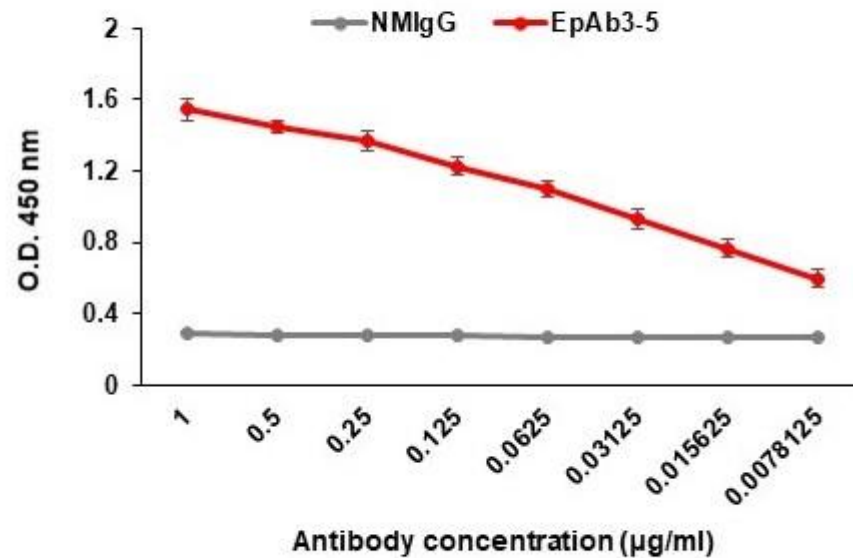


Relative intensity of EpAb3-5 binding to HCT116



1. HCT116 cells was seeded at 2×10^4 per well.
2. 2% PFA fixing 20 mines, RT.
3. Wash by PBS-T_{0.05%} 3 times.
4. 1%BSA in PBS-T blocking 1hr, RT.
5. Primary antibody incubated 1 hr, RT.
6. Wash by PBS-T_{0.05%} 3 times.
7. Secondary antibody (1:5000 diluted in 1% BSA) incubated 1 hr, RT.
8. Wash by PBS-T_{0.05%} 4 times.
9. Color developed by 100 µL TMB, reaction was stopped by 100 µL 2N HCl.
10. The absorbance was read at O.D.450 nm.