

BioMab, Inc.

Improve Human Health Through Innovations

MSC Expansion Kit

BioMab –MSC Expansion kit

1. For adipose-MSC, bone-marrow-MSC, cord blood-MSC
2. Simple protocol, high efficiency
3. US sourced raw material (FDA compliant)
4. Low CD142 expressions
5. Fast doubling time
6. Consistent quality, no jelly shaped formation during culturing



BioMab –MSC culture Medium

Product specification

- Research Grade (RUO) : BMI-MSC Qualified (1L)

Product features

- Formulated without HEPES buffer
- Addition of serum at normal concentration is needed
- Monolayer expansion for MSC of various sources
- Storage conditions: 2-8°C sealed



BioMab –MSC culture Medium

Product specification

- Research Grade (RUO) : BMI-MSC Qualified (1L)

Product features

- Formulated without HEPES buffer
- Addition of serum at normal concentration is needed
- Monolayer expansion for MSC of various sources
- Storage conditions: 2-8°C sealed

BioMab – MSC culture Medium no phenol red

Product specification

- Research Grade (RUO) : BMI-MSC Qualified (1L)

Product features

- Formulated without HEPES buffer
- Addition of serum at normal concentration is needed
- Monolayer expansion for MSC of various sources
- Storage conditions: 2-8°C sealed



BioMab - Human Platelet lysate(hPL)

Product specifications

- Research Grade (RUO) : BMI-hPL Qualified (100mL)

Features

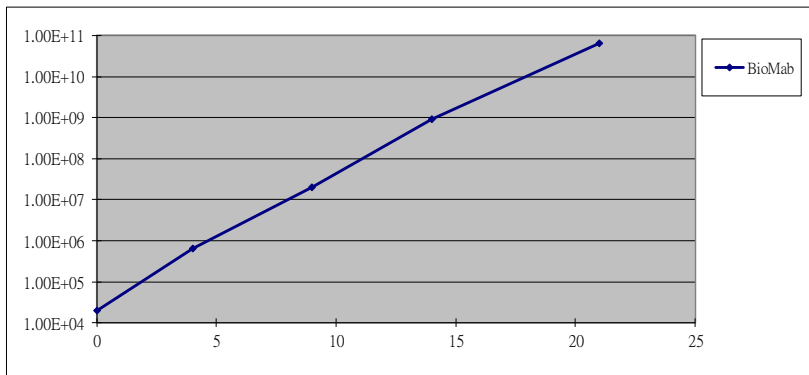
- Sourced from human platelet lysate
- No need for addition of heparin, lot to lot consistency
- Improved cell growth
- Working concentration at 5%
- Storage condition: -20°C



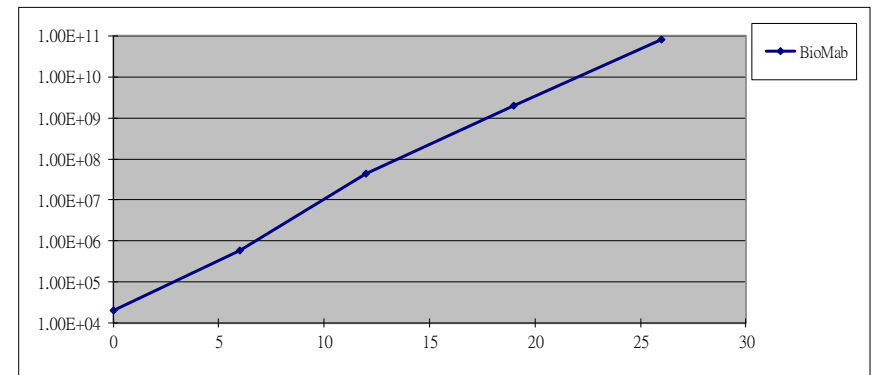
Performance

Cell growth curve

Adipose tissue MSC(AD-MSC)



Bone Marrow MSC(BM-MSC)

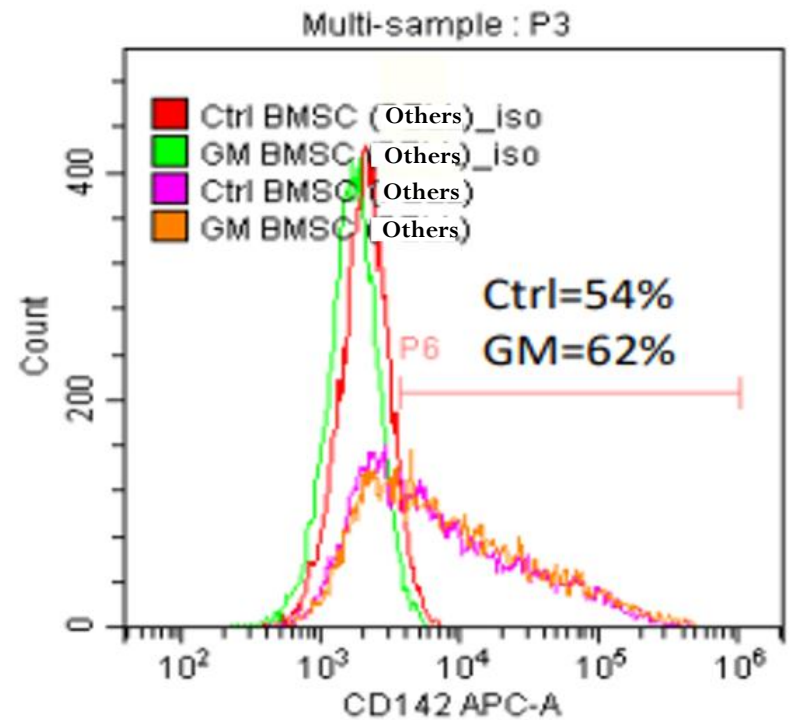
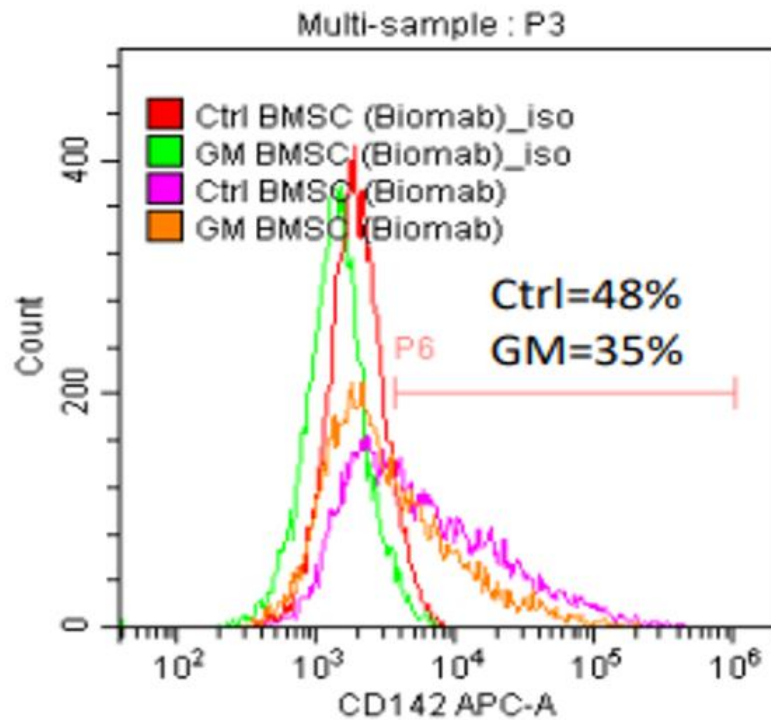


Culture medium: BMI-MSC medium + 5% BMI-hPL

AD-MSC Doubling Time \approx 23.29 Hr

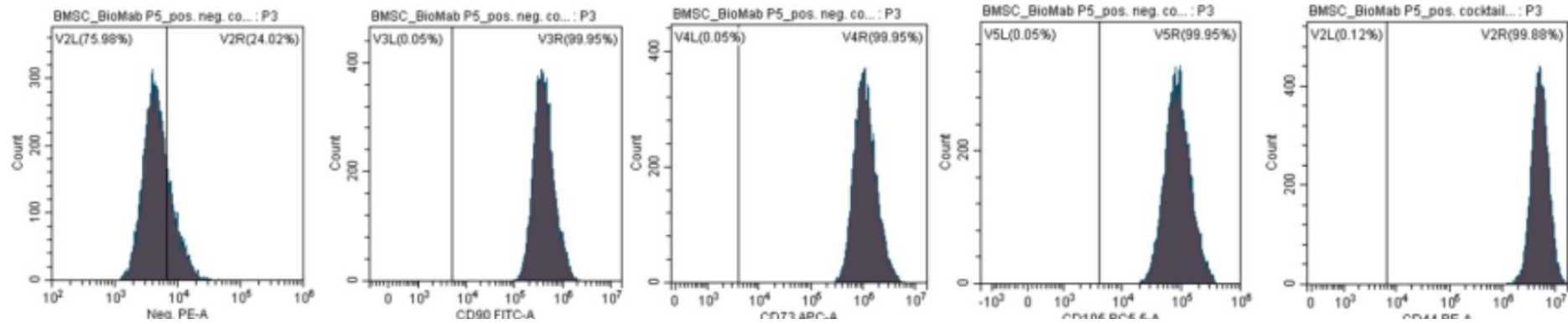
BM-MSC Doubling Time \approx 28.39 Hr

CD142 (tissue factor) Expressions



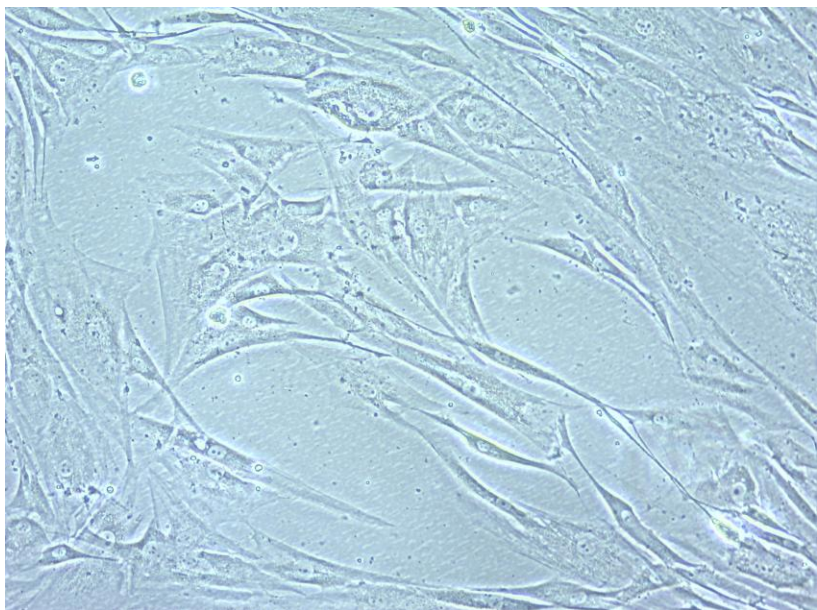
BM-MSC P7 CD142 (tissue factor) Expressions

BioMab BM-MSC CD Markers Expressions

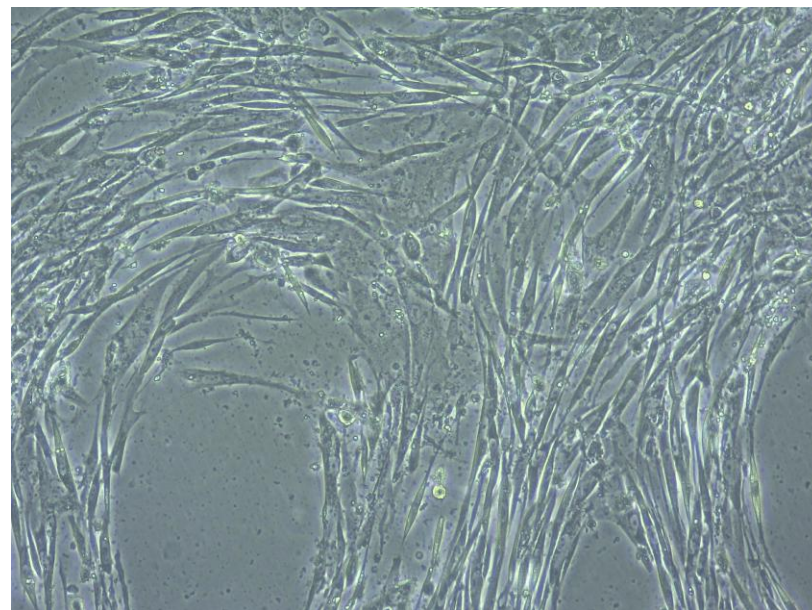


Cell morphology

AD-MSK, 100X



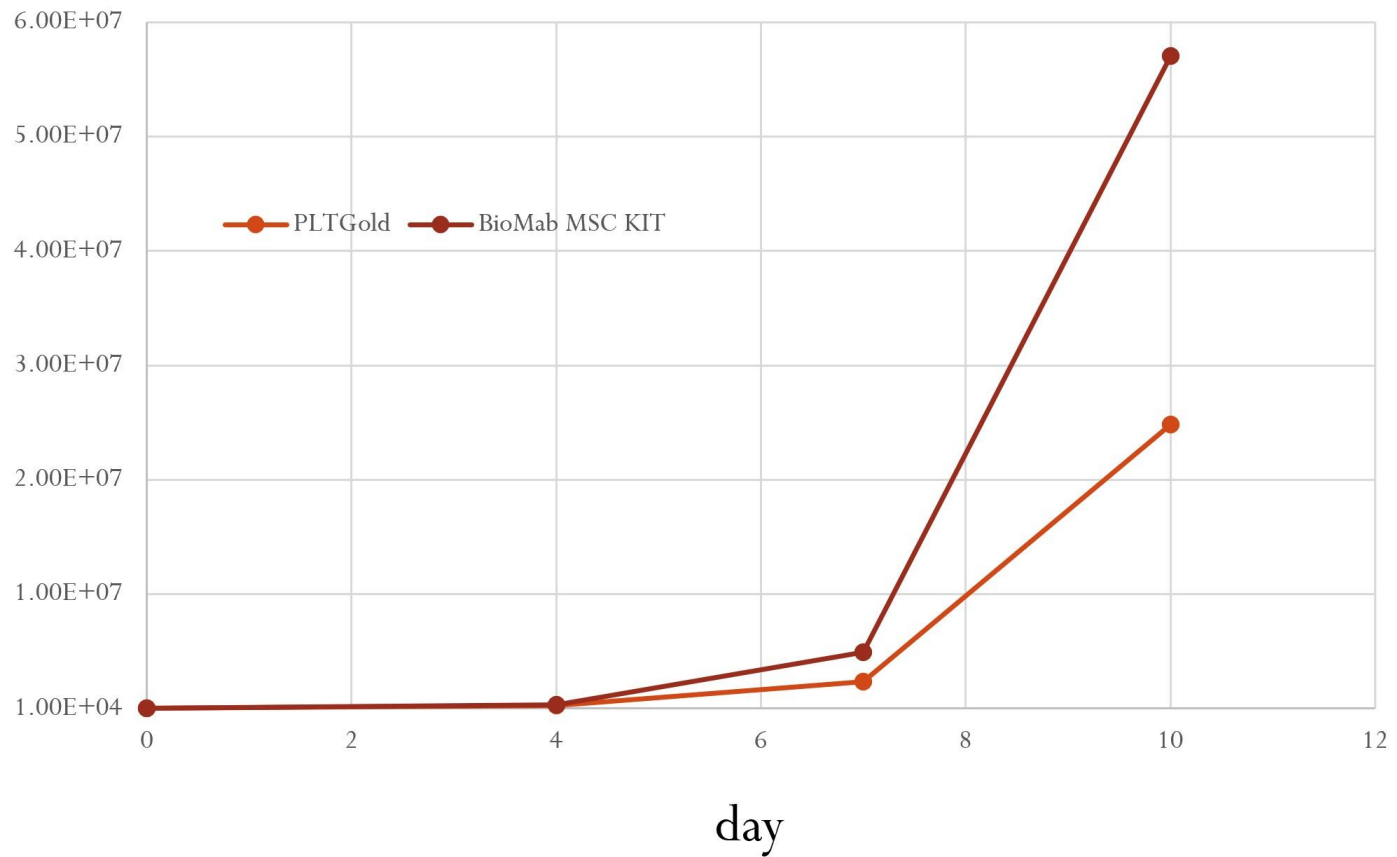
BM-MSK, 100X



Competitive Analysis

Competitive Analysis

Cell growth curve



MSC – Competitive Landscape

	CD142 Expression	Quality
BioMab	Low	No Jelly-Like Formation
PLTGold	High	No Jelly-Like Formation
AventaCell	High	Jelly-Like Formation

Contact information

Company : BioMab Inc.

Email: joshua.ho@biomabinc.com

Tel: +886-952-456-158

Web: www.biomabinc.com