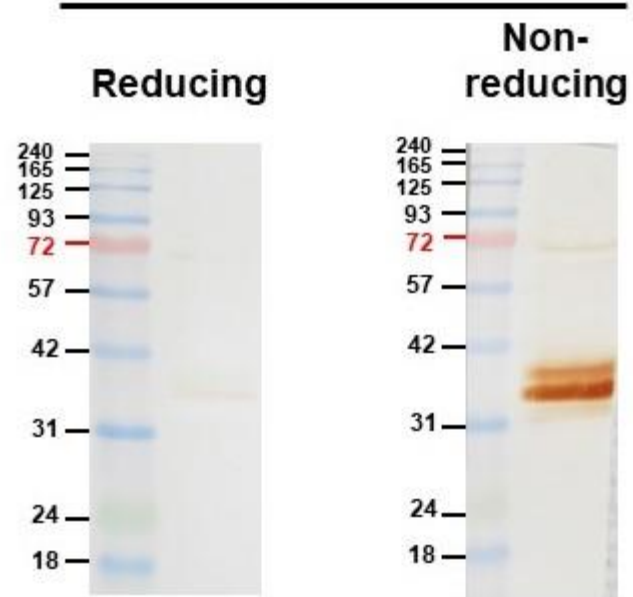


## EpAb3-5



- **Cell lysate:** HCT116 30  $\mu\text{g}$ / lane
- 12% SDS-PAGE gel
- **Blocking buffer:**  
5% skim milk, 1hr, RT
- **Antibody for immunoblot:**  
2  $\mu\text{g}/\text{ml}$ , O/N, 4°C
- **Secondary Ab:**  
1:10000 in 1%BSA, 1hr, RT